

**DOCUMENT 00 90 00**  
**ADDENDUM**

**ADDENDUM No.:** 1

**DATE:** April 1, 2024

**RE:** HOUSING AUTHORITY OF THE CITY OF LA CROSSE  
FOREST PARK EXTERIOR IMPROVEMENTS  
1230 BADGER STREET  
LA CROSSE, WISCONSIN 54601  
PROJECT NO. 23068

**FROM:** HSR Associates, Inc  
100 Milwaukee Street  
La Crosse, WI 54603  
(608) 784-1830

**TO:** Prospective Bidders

---

This addendum forms a part of the Contract Documents and modifies the original Bidding Documents dated March 2024. Acknowledge receipt of this Addendum in the space provided on the bid form. Failure to do so may subject the Bidder to disqualification.

This Addendum consists of: 2 pages, 1 document, 1 section, and 4 drawings.

---

**DOCUMENT:**

1. Document Pre-bid meeting sign-in sheet.

**CHANGES TO SPECIFICATIONS:**

2. Section 32 31 23 PVC Fences and Gates
  - a. See the revised section included in this addendum. Disregard the previous version.
  - b. In paragraph 2.3.A.1 add "and 48 inches"
  - c. In paragraph 2.3.A. add "5. Color: Mocha"

**CHANGES TO DRAWINGS**

3. Sheet C050 DEMOLITION PLAN 30"x42"
  - a. See the revised sheet included in this addendum. Disregard the previous version.
  - b. Added locations and requirements for electrical trenches across paved areas.
4. Sheet C100 SITE PLAN 30"x42"
  - a. See the revised sheet included in this addendum. Disregard the previous version.
  - b. Added 48" fence.
5. Sheet L100 LANDSCAPE PLAN 30"x42"
  - a. See the revised sheet included in this addendum. Disregard the previous version.
  - b. Added plantings and associated landscaping.

6. Sheet E002 ELECTRICAL SITE PLAN 30"x42"

- a. See the revised sheet included in this addendum. Disregard the previous version.
- b. Plan 1/E002: revise lighting at south parking lot area.
- c. Specific notes : Added note #4.
- d. Pole base detail 2/E002: Extended RE-bar to top of pole base and changed ground rod to 10'.
- e. Pole base detail 3/E002: Changes ground rod to 8'.
- f. Revised light fixture schedule.

**END OF DOCUMENT 00 90 00**

# Pre-Bid Meeting Sign-In Sheet

March 26, 2024

**PROJECT: HOUSING AUTHORITY OF THE CITY OF LA CROSSE**  
**LHA FOREST PARK EXTERIOR IMPROVEMENTS**  
**LA CROSSE, WI**  
**HSR 23068**

**BID OPENING: 2:00 PM, April 9, 2024**

Name	Company
1. Doug Ramsey	HSR
2. <i>Steve Schauf</i>	<i>LAA</i>
3. <i>Jeremy Gunderson</i>	<i>LHA</i>
4. <i>Jeff Moorhouse</i>	<i>Paragon</i>
5. <i>John Brand</i>	<i>Brand Builders.</i>
6. <i>Kevin Eich</i>	<i>Padesky Electric</i>
7. <i>Ryan Metzler</i>	<i>Padesky Electric</i>
8. <i>Ryan Burke</i>	<i>HSR</i>
9. Mike Lorens	HSR
10.	
11.	
12.	
13.	
14.	
15.	
16.	
17.	
18.	
19.	
20.	

Page Intentionally Left Blank

**SECTION 32 31 23  
PVC FENCES AND GATES**

**PART 1 - GENERAL**

**1.1 SECTION INCLUDES**

- A. PVC fences and gates.

**1.2 RELATED WORK**

- A. Section 32 13 13 - Cast In-Place Concrete

**1.3 REFERENCES**

- A. ASTM F964 – Standard Specification for Rigid Poly (Vinyl Chloride) (PVC) Exterior Professional Used for fencing.

**1.4 SUBMITTALS**

- A. Provide the following submittals in accordance with this section.
- B. Product Data: Submit manufacturer's product data, including installation instructions.
- C. Shop Drawings: Submit manufacturer's shop drawings, indicating materials, dimensions, tolerances, hardware, fasteners, mounting, accessories, and finish.
- D. Warranty: Submit manufacturer's standard warranty.

**1.5 DELIEVERY, STORAGE AND HANDLING**

- A. Delivery: Deliver materials to site in manufacturer's original, unopened containers and packaging, with labels clearly identifying product name and manufacturer.
- B. Storage: Store materials in clean, dry area in accordance with manufacturer's instructions. Keep temporary protective coverings in place.
- C. Handling: Protect materials and finish from damage during handling and installation.

**PART 2 – PRODUCTS**

**2.1 MANUFACTURERS**

- A. Items listed below are from:
  - 1. Digger Specialties, Inc., PO Box 241, Bremen, Indiana 46506. Toll Free (800)446-7659. Phone (574)546-5999, Fax (574)546-5099. [www.diggerspecialties.com](http://www.diggerspecialties.com).
- B. Substitutions: Submit proposed substitutions at least 7 days prior to the bid.

**2.2 PVC FENCES**

- A. Rigid Polyvinyl Chloride (PVC) Exterior Profiles, ASTM F954.
  - 1. Impact modifiers for cold weather resistance.
  - 2. Titanium dioxide, 10 parts, for UV resistance.

## **2.3 PRIVACY VINYL FENCING**

- A. Model: Superior Fence
  - 1. Height: 72 inches and 48 inches
  - 2. Verticals: snap-lock tongue and groove privacy panel.
  - 3. Fasteners: Stainless steel.
  - 4. Fabrication: Factory preassembled
  - 5. Color: Mocha

## **PART 3 – EXECUTION**

### **3.1 EXAMINATION**

- A. Examine areas to receive fences for property lines and underground utilities.
- B. Notify Landscape Architect of conditions that would adversely affect installation or subsequent use of fences.
- C. Do not proceed with installation until unsatisfactory conditions are corrected.

### **3.2 INSTALLATION**

- A. Install fences in accordance with manufacturer's instructions at locations indicated on the drawings.
- B. Install fence plumb, level, straight, square, accurately aligned, correctly located, to proper elevation, and secure.
- C. Install posts in concrete. Ensure concrete fills 3-inch diameter frost up-lift hole in posts.
- D. Repair minor damages to finish in accordance with manufacturer's instructions and as approved by Landscape Architect. Remove and replace damaged components that cannot be successfully repaired as determined by Landscape Architect

### **3.3 ADJUSTING**

- A. Adjust gates and operating hardware to function properly and for smooth operation without binding.

### **3.4 CLEANING**

- A. Clean fences and gates promptly after installation in accordance with manufacturer's instructions.
- B. Remove labels and temporary protective coverings.
- C. Do not use harsh cleaning materials or methods that would damage finish.

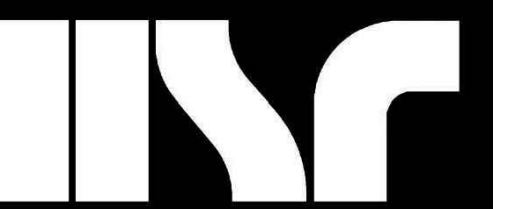
### **3.5 PROTECTION**

- A. Protect installed fences and gates to ensure that, except for normal weathering, fences and gates will be without damage or deterioration at time of substantial completion.

END OF SECTION 32 31 23

Page Intentionally Left Blank





Consultant:

Project Title:  
HSR Project Number:  
23068

Project Date:  
Issue Date

Drawn By:  
C.G.

Key Plan:

No.	Description	Date
A01	Addendum 1	04/01/24

Graphic Scale: 1"=20'

Last Update: 3/27/2024

C050

DEMOLITION NOTES

-The location of existing utilities, both underground and overhead are approximate only and have not been independently verified by the owner or its representatives. The contractor shall be responsible for determining the exact location of all existing utilities, whether shown on these plans or not, before commencing work, and shall be fully responsible for any and all damages which might be caused by the contractor's failure to exactly locate and preserve any and all utilities. CALL DIGGERS HOTLINE (800) 242-8511

-The underground locations of the Public Utilities were marked by representatives of those companies. The locations of the privately owned underground utilities were not marked.

-There may be more underground utility installations within the project area that are not shown.

-It shall be the contractor's responsibility to arrange for any necessary inspections by local government that may be required.

-Any and all parties utilizing vertical datum shall always check into at least two (2) benchmarks to avoid mistakes due to hydrant adjustments or transpositional errors. Failure to do so will be considered tantamount to gross negligence and subject the offending party to any damages resulting therefrom.

-There may be discrepancies between the building exterior as located on the survey and what was provided by the architect. Verify dimensions prior to construction.

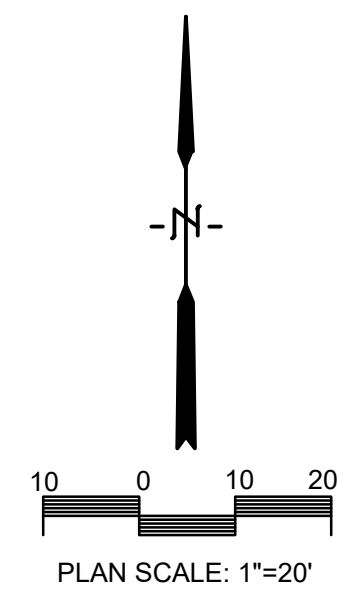
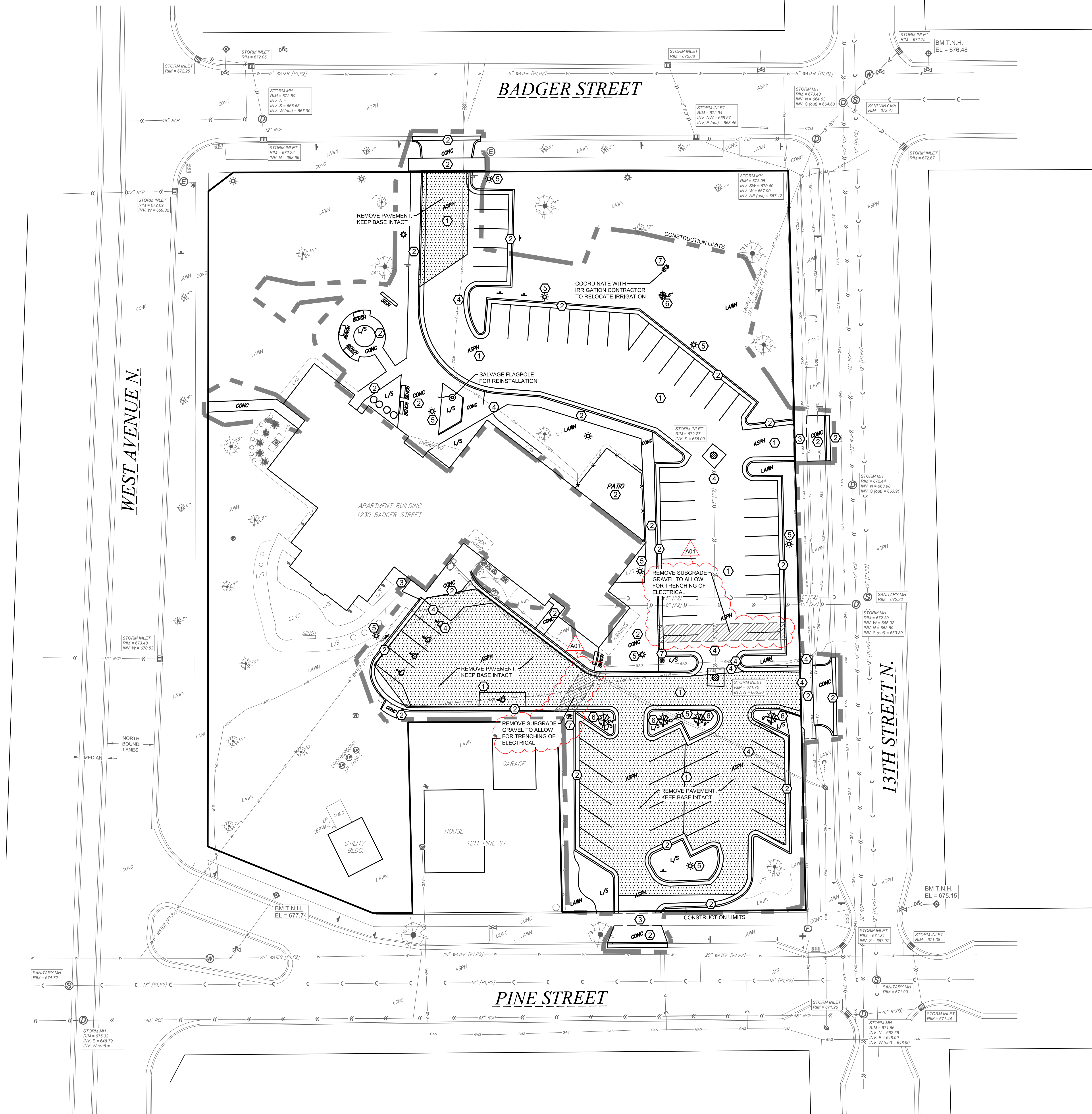
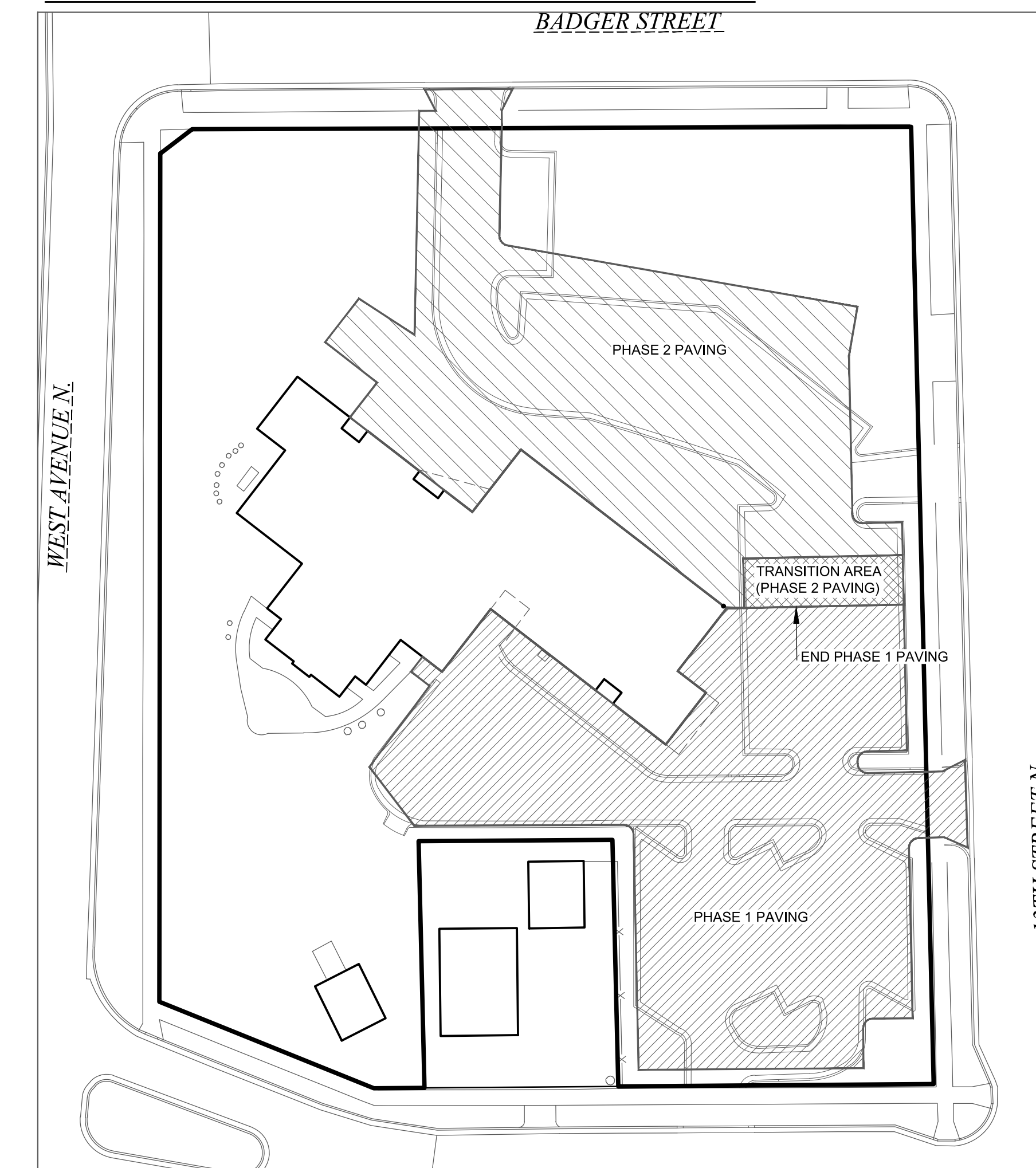
-Coordinate removals, abandonment and disconnection of existing utilities with respective building trades to ensure smooth transition from existing to proposed connections.

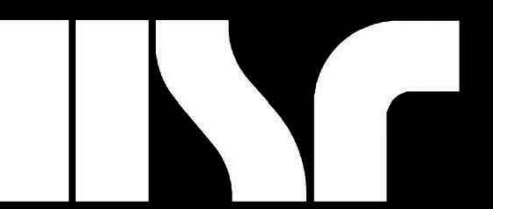
-Demolitions will need to be timed to correspond with the extended staging of the project which impacts different areas at various times. See staging plan for additional information. Do not demolish site components until scheduled.

DEMOLITION NOTES

- ① SAW CUT AND REMOVE EXISTING PAVEMENT
- ② REMOVE EXISTING CONCRETE CURB OR PAVEMENT TO NEAREST JOINT
- ③ PROTECT EXISTING IMPROVEMENT IN PLACE. CITY SIDEWALK AT REMOVED APRONS TO REMAIN
- ④ PROTECT EXISTING UTILITY
- ⑤ REMOVE EXISTING UTILITY
- ⑥ REMOVE EXISTING TREE
- ⑦ COORDINATE WITH IRRIGATION CONTRACTOR FOR RELOCATION OF ANY IRRIGATION. OWNER WILL CONTRACT AND PAY FOR THE CONTRACTOR DIRECTLY. PROVIDE ADEQUATE NOTICE TO IRRIGATION CONTRACTOR TO ABANDON, SALVAGE AND REPLACE SYSTEM COMPONENTS. COORDINATE THE SCHEDULE TO ALLOW FOR SLEEVES TO BE INSTALLED WHERE NECESSARY. MARK OR OTHERWISE DOCUMENT LOCATIONS WHERE IRRIGATION COMPONENTS ARE EXPOSED OR DAMAGED DURING WORK.

PHASING PLAN





Consultant:



Environmental Design & Consulting  
CIVIL ENGINEERING LANDSCAPE ARCHITECTURE SURVEYING  
833 COPLAND AVENUE LA CROSSE, WI 54603  
TEL: 608.781.3110 FAX: 608.781.3197 Paragon-Associates

HOUSING AUTHORITY OF THE CITY OF LA CROSSE  
FOREST PARK EXTERIOR IMPROVEMENTS

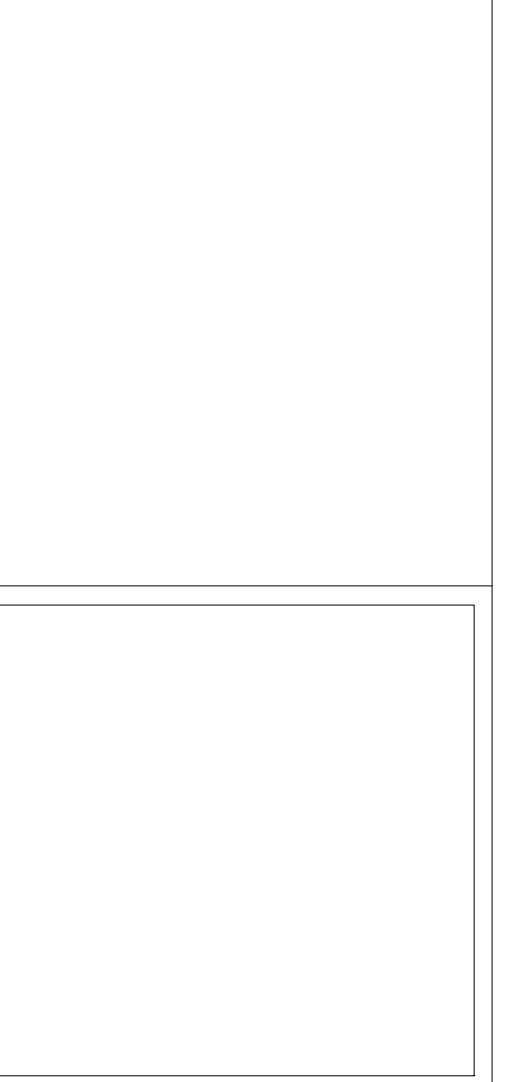
Project Title:

HSR Project Number: 23068

Project Date: Issue Date

Drawn By: C.G.

Key Plan:



No.	Description	Date
A01	Addendum 1	04/01/24

Graphic Scale: 1"=20'

Last Update: 3/27/2024

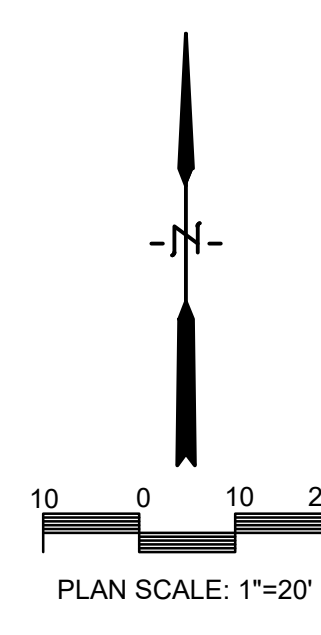
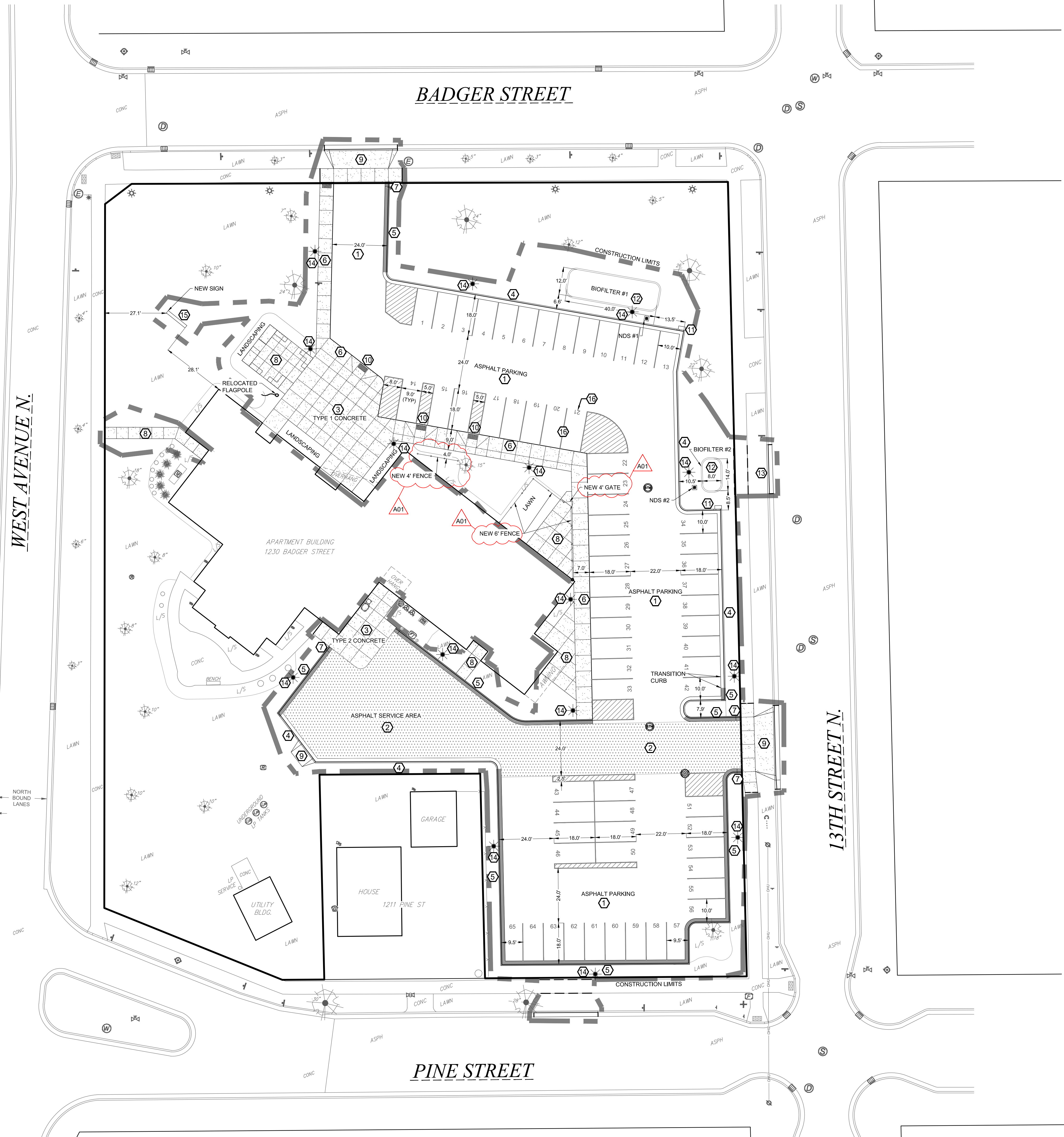
C100

SITE NOTES

- The location of existing utilities, both underground and overhead are approximate only and have not been independently verified by the owner or its representatives. The contractor shall be responsible for determining the exact location of all existing utilities, whether shown on these plans or not, before commencing work, and shall be fully responsible for any and all damages which might be caused by the contractor's failure to exactly locate and preserve any and all utilities. CALL DIGGERS HOTLINE (800) 242-8511
- The underground locations of the Public Utilities were marked by representatives of those companies. The locations of the privately owned underground utilities were not marked.
- There may be more underground utility installations within the project area that are not shown.
- It shall be the contractors responsibility to arrange for any necessary inspections by local government that may be required.
- Any and all parties utilizing vertical datum shall always check into at least two (2) benchmarks to avoid mistakes due to hydrant adjustments or transpositional errors. Failure to do so will be considered tantamount to gross negligence and subject the offending party to any damages resulting therefrom.
- There may be discrepancies between the building exterior as located on the survey and what was provided by the architect. Verify dimensions prior to construction.

SITE NOTES

- SEE DETAIL (A) FOR ASPHALT PAVEMENT - TYPE 1
- SEE DETAIL (A) FOR ASPHALT PAVEMENT - TYPE 2
- SEE DETAIL (C) FOR CONCRETE PAVEMENT SECTION
- SEE DETAIL (C) FOR TYPICAL 24" CURB AND GUTTER SECTION
- SEE DETAIL (D) FOR 24" CURB AND GUTTER SECTION - REVERSE SLOPE
- SEE DETAIL (E) FOR INTEGRAL CURB/SIDEWALK SECTION
- SEE DETAIL (F) FOR END SECTION CURB AND GUTTER
- SEE DETAIL (G) FOR CONCRETE PAVING AND JOINTING
- SEE DETAIL (H) FOR STANDARD CONCRETE APRON
- SEE DETAIL (I) FOR SIDEWALK RAMP
- SEE DETAIL (J) FOR CURB CUT
- SEE DETAIL (K) FOR BIOFILTER
- REPLACE CURB AND GUTTER TO CITY OF LA CROSSE STANDARDS
- SEE ELECTRICAL FOR LIGHT POLES
- SEE ARCHITECTURAL DRAWINGS FOR SIGN DETAILS
- PARKING LOT STRIPING AND STALL NUMBERING



**PLAN NOTES:**

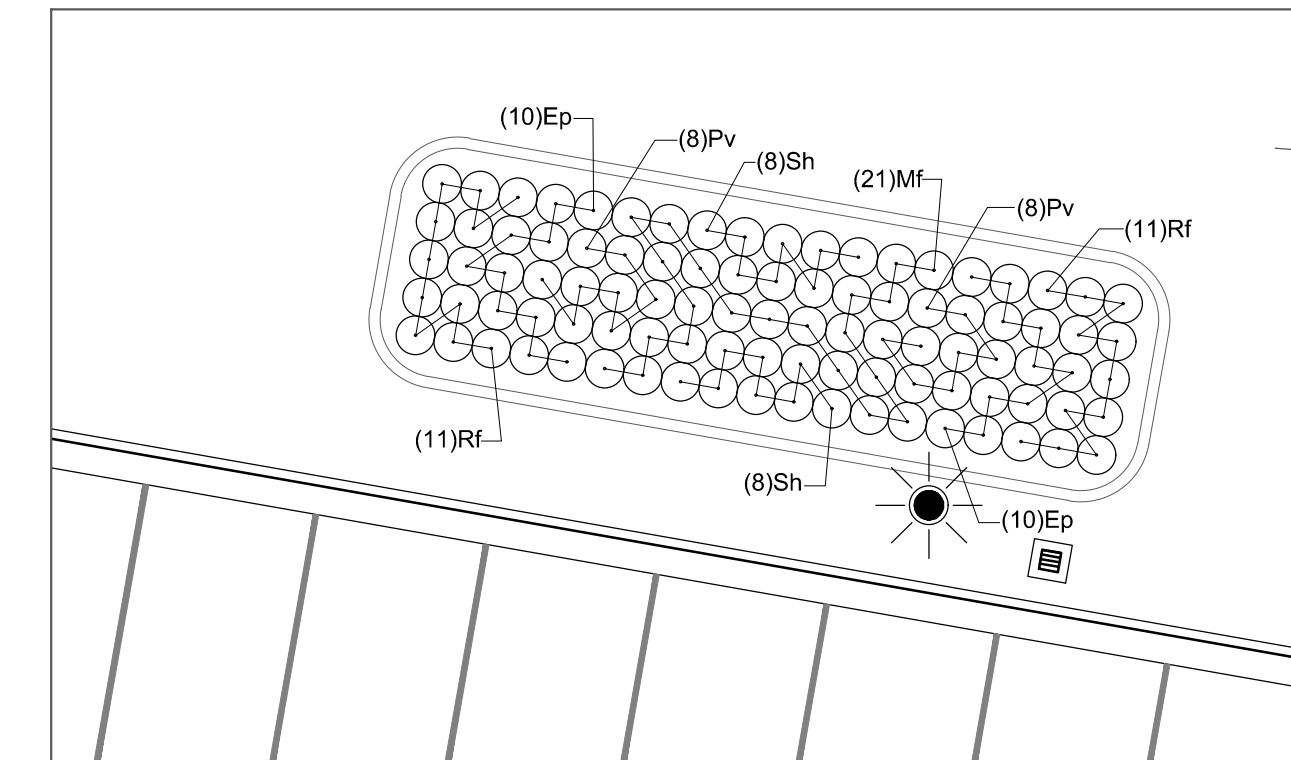
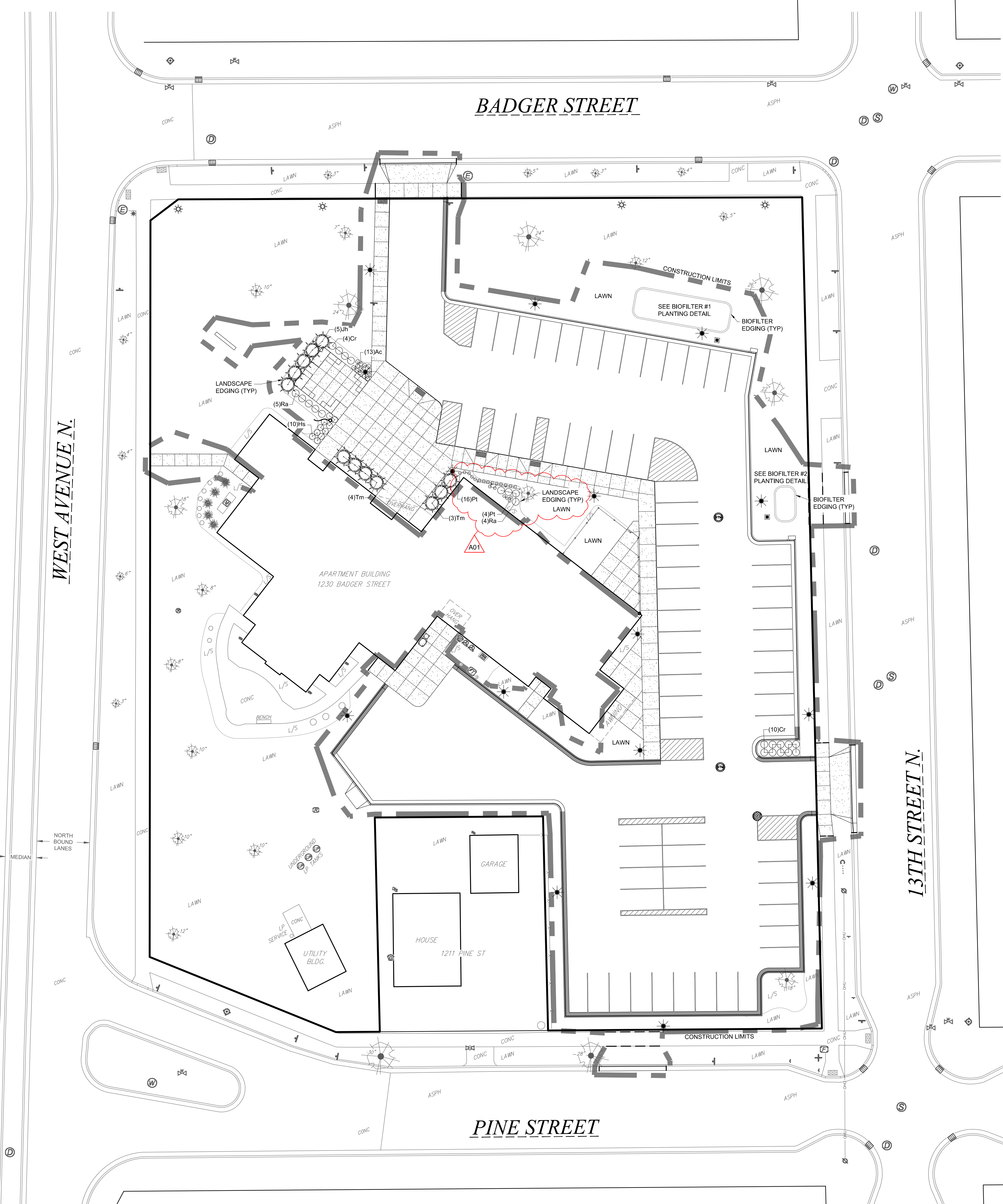
1. VERIFY UTILITY LOCATION BEFORE BEGINNING ANY WORK.
2. PLANTING BEDS SHALL HAVE 6" TOPSOIL AND 4" OF SHREDDED HARDWOOD BARK MULCH. PROVIDE STEEL EDGING AROUND ALL LANDSCAPE BEDS AS PER PLANS. PROVIDE BELGIAN WALL AND WEDGE BLOCKS AROUND ALL BIOFILTERS AND SPLASH PADS PER PLANS.
3. NEW AND DISTURBED LAWN AREAS SHALL BE RESTORED WITH SOD. REFER TO PLAN.
4. MODIFICATIONS TO PLANT SPACING MAY BE ADJUSTED IN THE FIELD BY LANDSCAPE CONTRACTOR. LANDSCAPE ARCHITECT SHALL BE NOTIFIED OF ANY PROPOSED CHANGES TO PLANT MATERIALS OR DESIGN.
5. LANDSCAPE CONTRACTOR SHALL VISIT SITE, INSPECT EXISTING CONDITIONS AND REVIEW PROPOSED PLANTING AND RELATED WORK.
6. THE LANDSCAPE ARCHITECT'S ESTIMATED QUANTITIES ARE SHOWN IN THE MATERIAL LIST-SCHEDULE FOR THE CONVENIENCE OF THE CONTRACTOR ONLY. CONTRACTOR SHALL VERIFY QUANTITIES SHOWN ON THE PLAN AND SHALL RELY ON THE SCHEDULED QUANTITIES AT THEIR OWN RISK. THE CONTRACTOR SHALL INCLUDE IN THE BID ALL PLANTINGS SHOWN ON THE DRAWINGS, WHETHER INCLUDED IN THE SCHEDULE OR NOT

**PLANT MATERIAL LIST-SCHEDULE**

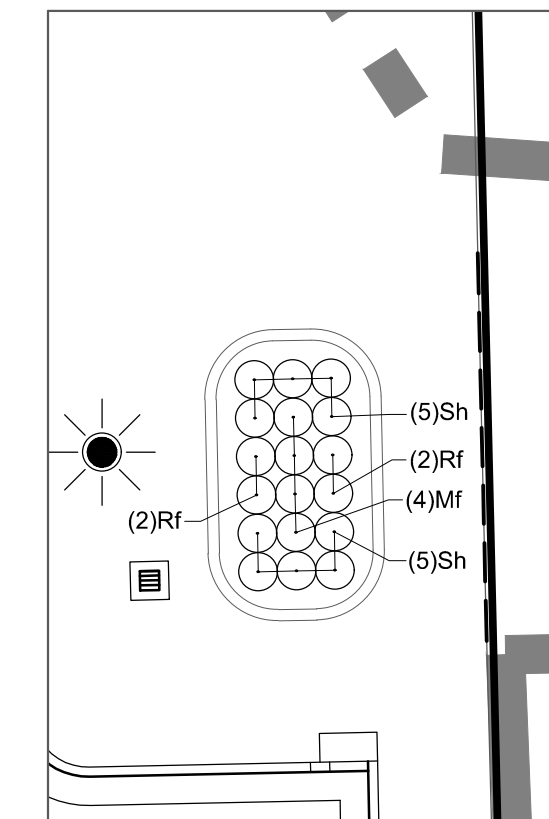
KEY	BOTANICAL NAME COMMON NAME	SIZE	QUANTITY
Ac	Achillea 'Moonshine' Moonshine Yarrow	2 quart	13
Cr	Cornus racemosa 'Muszam' Muskogum Dogwood	3 gal	14
Hs	Hemerocallis 'Stella d'Oro' Stella d'Oro Daylily	1 gal	10
Jh	Juniperus horizontalis 'Hughes' Hughes Juniper	5 gal	5
Pt	Pachysandra terminalis 'Green Carpet' Green Carpet Pachysandra	4" pot	20
Ra	Ribes alpinum 'Green Mound' Green Mound Alpine Currant	3 gal	9
Tm	Taxus x media 'Tauntoni' Tauntont Spreading Yew	5 gal	7

**PLANT MATERIAL LIST-SCHEDULE (BIOFILTER)**

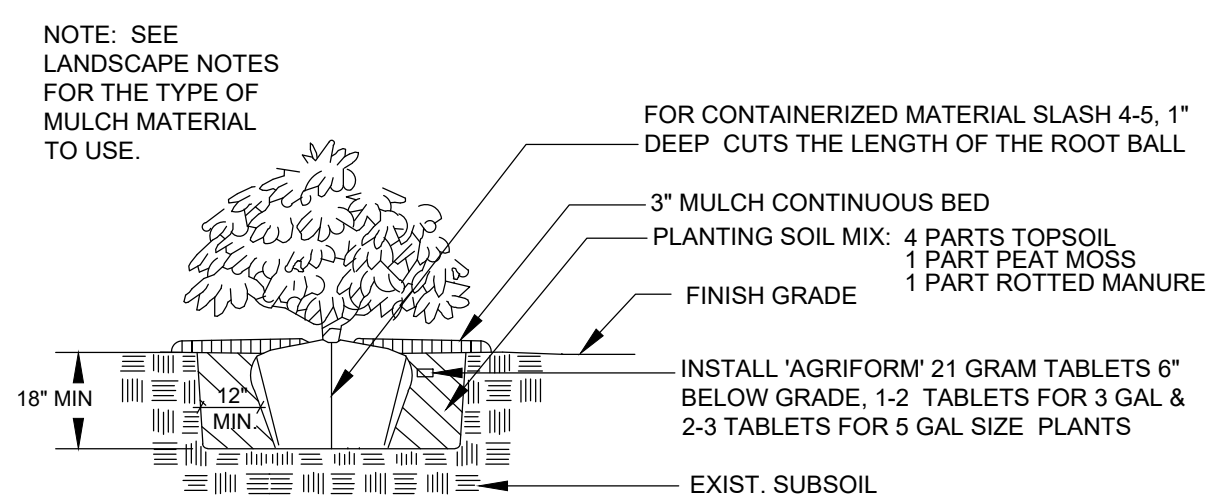
KEY	BOTANICAL NAME COMMON NAME	SIZE	QUANTITY
Ep	Echinacea purpurea Purple Coneflower	4" pot	20
Mf	Monarda fistulosa Bergamot	4" pot	25
Rf	Rudbeckia fulgida 'Blow' Vieira's Little Suzy Black-eyed Susan	4" pot	26
Sh	Sporobolus heterolepis Prairie Dropseed	4" pot	26



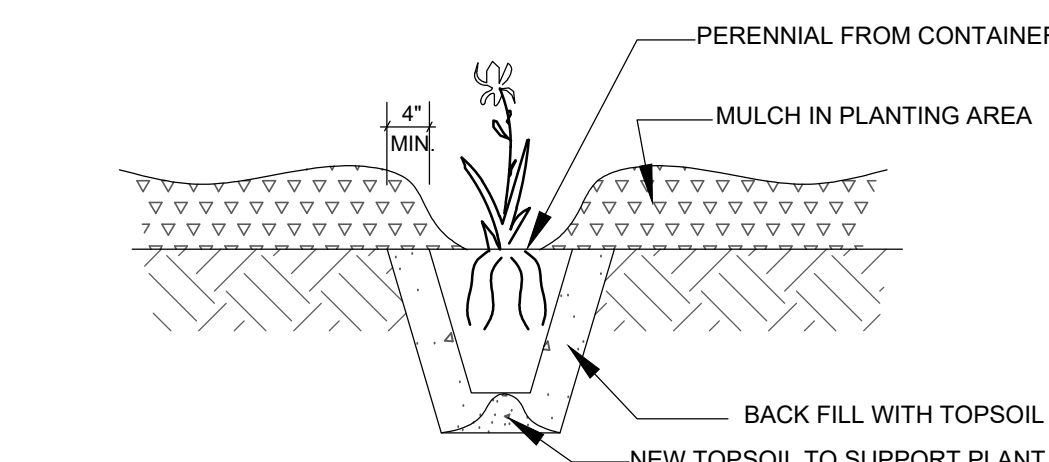
BIOFILTER #1 PLANTING DETAIL PLAN SCALE: 1"=10'



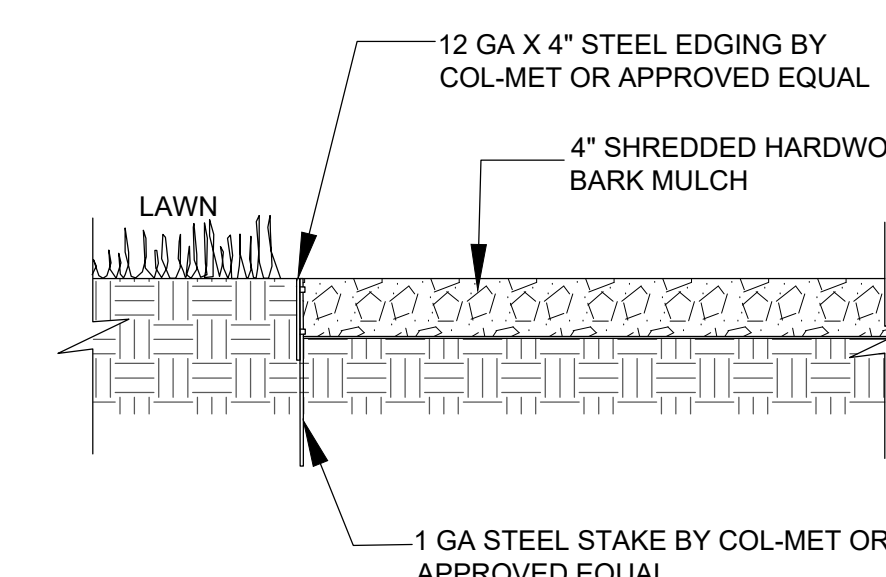
BIOFILTER #2 PLANTING DETAIL PLAN SCALE: 1"=10'



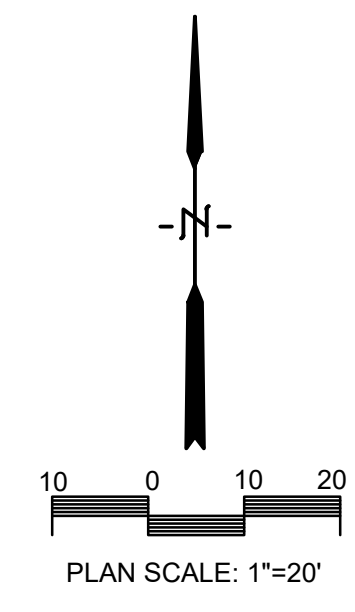
SHRUB PLANTING DETAIL NO SCALE



POTTED PLANTS PLANTING DETAIL NO SCALE



LANDSCAPE EDGING DETAIL NO SCALE





Consultant:

HOUSING AUTHORITY OF THE CITY OF LA CROSSE  
FOREST PARK EXTERIOR IMPROVEMENTS

Project Location: 1230 BADGER STREET  
LA CROSSE, WISCONSIN 54601

ELECTRICAL SITE PLAN

Project Title:

HSR Project Number:  
**HSR # 23068**

Project Date:  
**MARCH 2024**

Drawn By:  
**SMG**

Key Plan:

No.	Description	Date
A01	ADDED NUM #1	04/01/2024

Graphic Scale:  
**VARIES**

Last Update:  
**3/31/2024 12:43:02 PM**

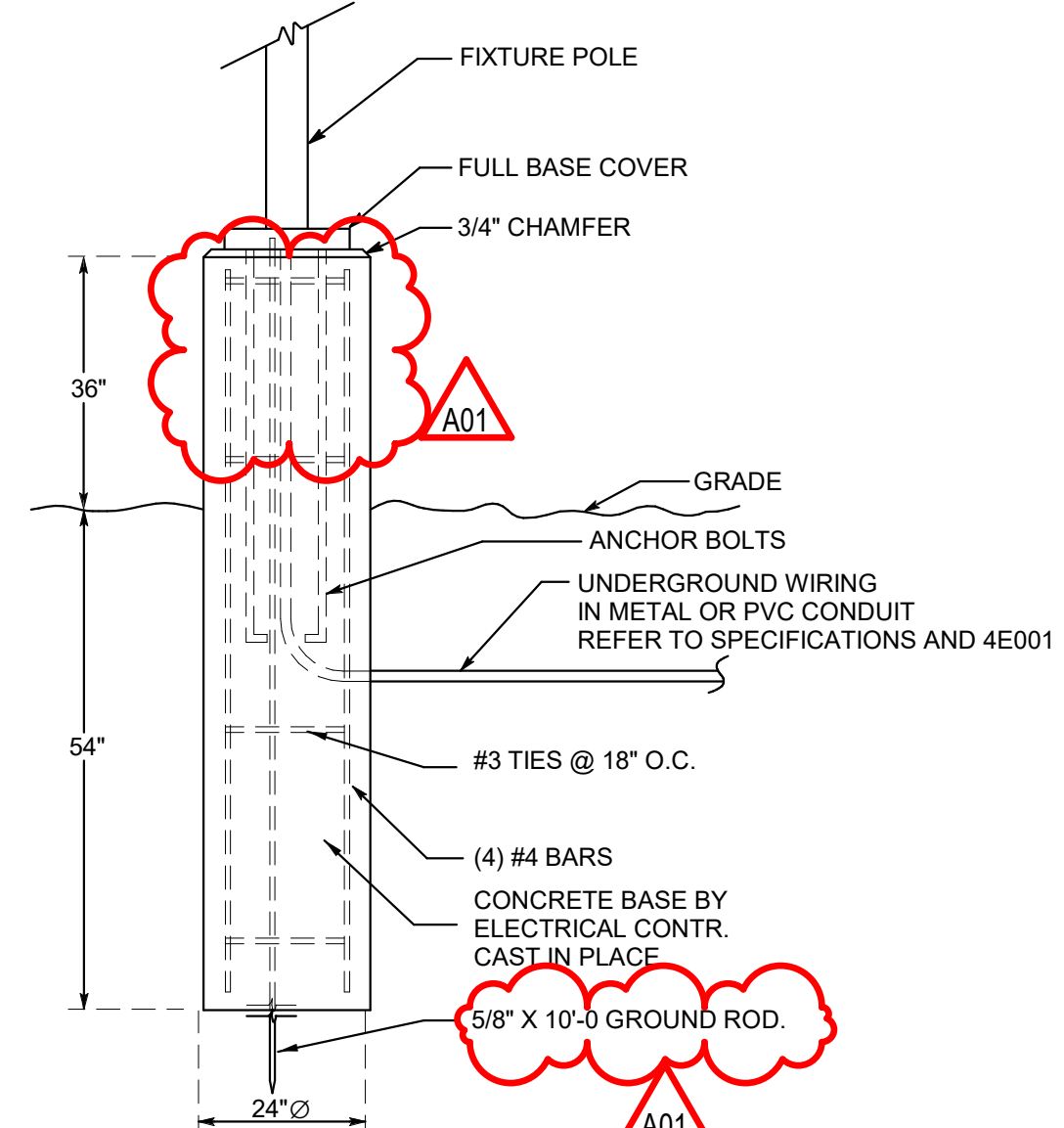
**E002**

**GENERAL NOTES : REMODEL**

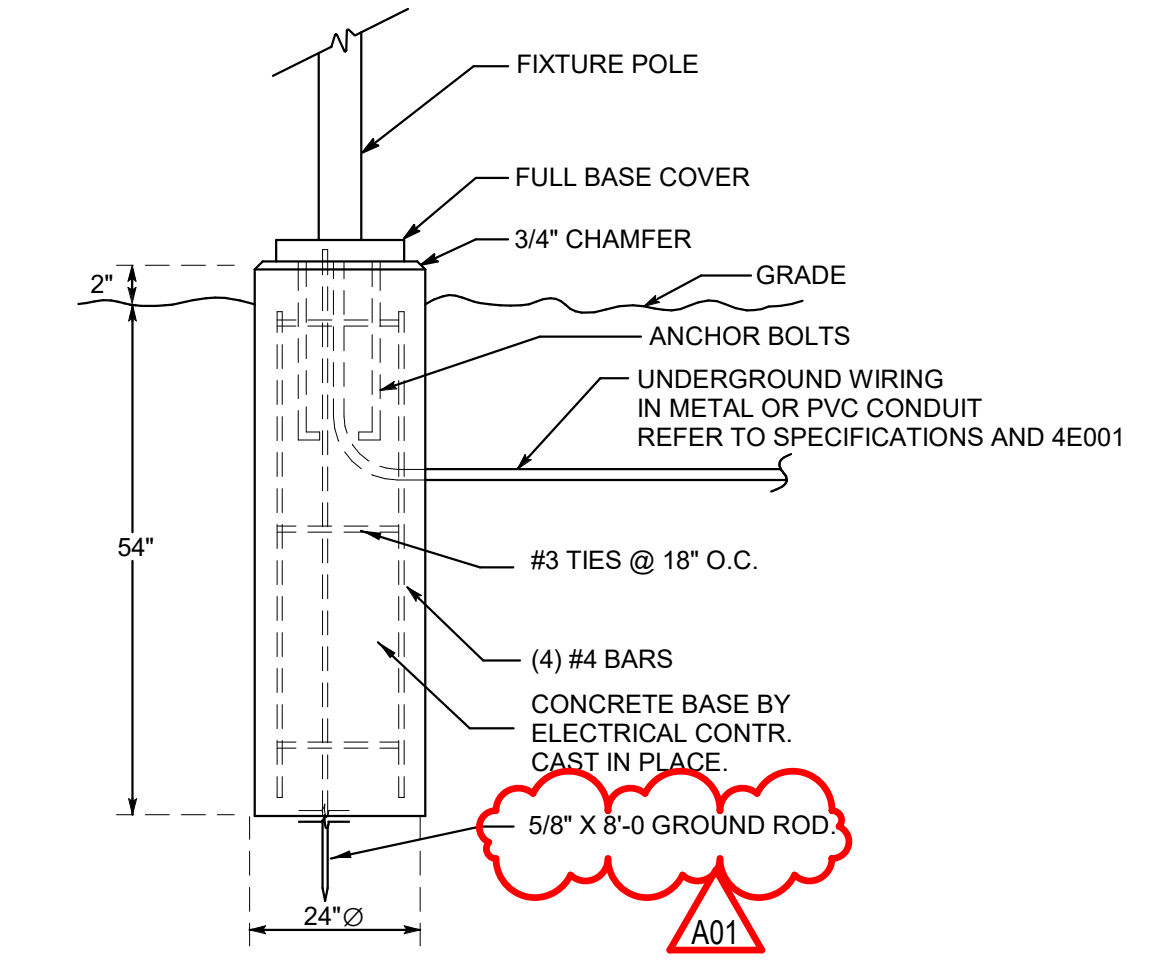
- A ALL ELECTRICAL DEVICES SHOWN TO BE NEW UNLESS INDICATED OTHERWISE.
- B MAINTAIN OPERATION OF ALL EXISTING ELECTRICAL DEVICES. EXTEND WIRING/CONDUIT AS REQUIRED.
- C PROVIDE GROUND CONDUCTOR IN ALL REWAYS
- D PROVIDE SEPARATE NEUTRAL CONDUCTORS FOR EACH BRANCH CIRCUIT.
- E PROVIDE FIRE STOPPING AND SMOKE DRAFT STOPPING AT ALL CONDUIT PENETRATIONS, REFER TO SPECIFICATIONS SECTION 07940 FOR FIRE RESISTIVE AND NON-FIRE RESISTIVE ASSEMBLIES.

**SPECIFIC NOTES : REMODEL**

- 1 PROVIDE CONCRETE POLE BASES. REFER TO DETAILS.
- 2 PROVIDE (2) 20 AMP CIRCUIT BREAKERS IN EXISTING PANEL TO FEED SITE LIGHTS VIA PHOTOCONTROLLER.
- 3 PROVIDE PHOTOCONTROL - TORX #2119A, 120/208 VOLT, 2000 WATT TO CONTROL SITE LIGHTING POLES
- 4 MASK OFF MOTION SENSOR AS TO NOT PICK UP SIDEWALK TRAFFIC.



**2** POLE DETAIL-TYPE OA3  
NTS



**3** POLE DETAIL-TYPE OB2, OB3 & OB4  
NTS

**LIGHT FIXTURE SCHEDULE**

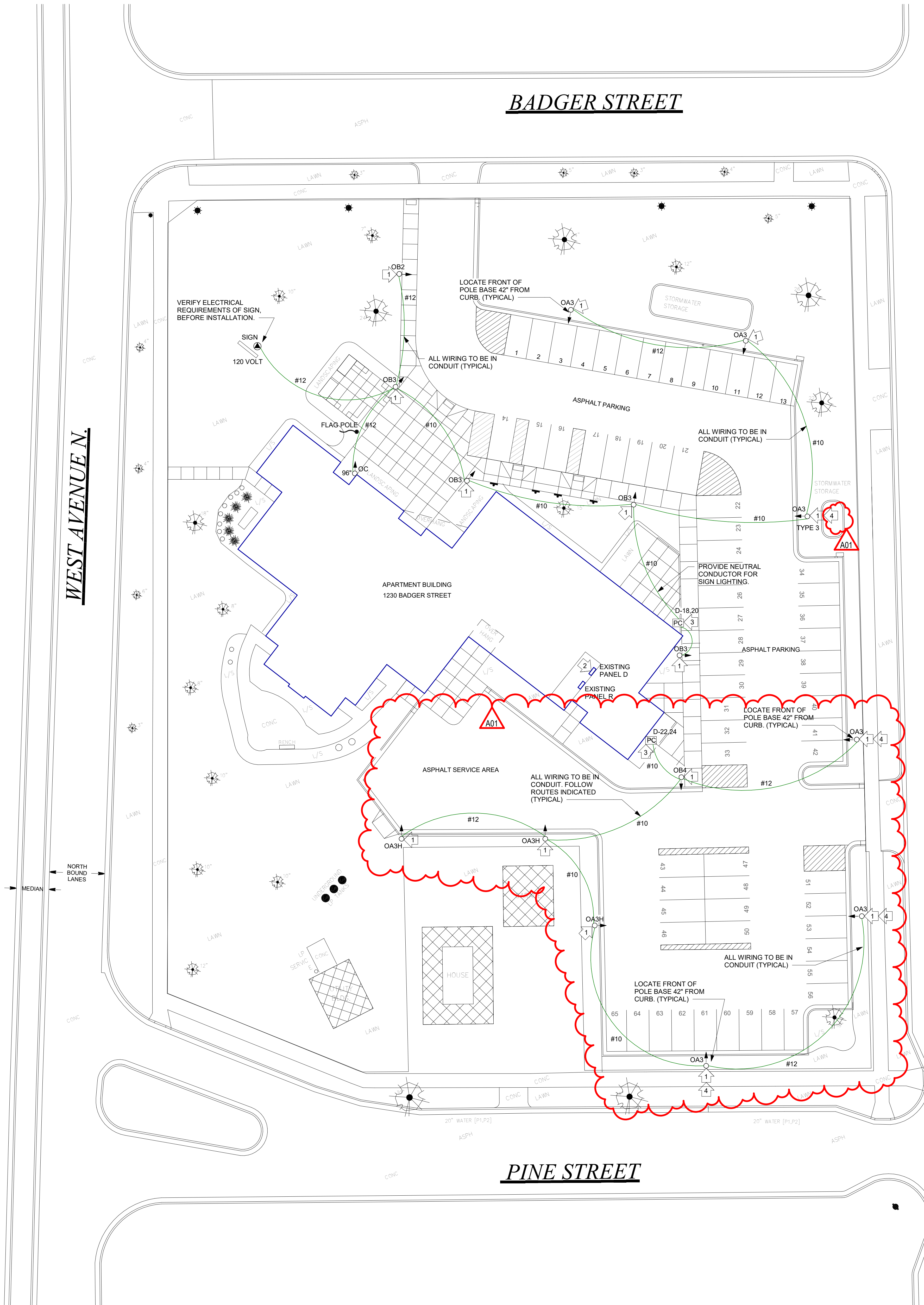
TYPE	MANUFACTURER	CATALOG NUMBER	DESCRIPTION	VOLT	MOUNTING **				WATTS	COLOR TEMP.	REMARKS
					F	S	P	O			
OA3	GARDCO	OPF-SP04840T3MAR12AR1-BZ/SRDR-WIAP-LB-L2	SITE LIGHTING- TYPE 3 DISTR. WITH INTERACT CONTROL	208		*			53	4000K	1.5
OA3H	GARDCO	OPF-SP04840T3MAR12AR1-BZ/SRDR-WIAP-LB-L2	SITE LIGHTING- TYPE 3 DISTR./HS WITH INTERACT CONTROL	208		*			53	4000K	1.3,5
OB2	GARDCO	OPF-SP04840T2MAR12AR1-BZ/SRDR-WIAP-LB-L2	SITE LIGHTING- TYPE 2 DISTR. WITH INTERACT CONTROL	208		*			53	4000K	1.5
OB3	GARDCO	OPF-SP04840T3MAR12AR1-BZ/SRDR-WIAP-LB-L2	SITE LIGHTING- TYPE 3 DISTR. WITH INTERACT CONTROL	208		*			53	4000K	2.5
OB4	GARDCO	OPF-SP04840T4MAR12AR1-EHS-BZ/SRDR-WIAP-LB-L2	SITE LIGHTING- TYPE 4 DISTR. WITH INTERACT CONTROL	208		*			53	4000K	2.5
OC	NLS LIGHTING	NV-F1-55-16-25W-40K9-KM-KMS3-STP12-SNL-BRZ-ECL	FLAG POLE LIGHT	208		*			25	4000K	4

\* SEE REMARKS  
\*\* (F) FLUSH MOUNT; (S) SURFACE MOUNT; (P) PENDANT HUNG; (O) OTHER-SEE REMARKS IN REGARDS TO FIXTURE MOUNTING.

REMARKS  
1. PROVIDE 15 FOOT POLE, 4" SQUARE STRAIGHT STEEL WITH 3 FOOT HIGH CONCRETE POLE BASE. POLE FINISH TO MATCH LUMINAIRE.  
2. PROVIDE 16 FOOT POLE, 4" SQUARE STRAIGHT STEEL WITH 2 INCH HIGH CONCRETE POLE BASE. POLE FINISH TO MATCH LUMINAIRE.  
3. PROVIDE FIXTURE WITH HOUSE SHIELD.  
4. FLAG POLE LIGHT, PROVIDE WITH KNUCKLE MOUNT AND EGG CRATE LOUVER, VERIFY MOUNTING LOCATION AND CONDUIT ROUTING. PAINT ANY EXPOSED CONDUIT TO MATCH BUILDING.  
5. PROVIDE LIGHT POLES WITH "INTERACT CONTROL". ALL LIGHT POLES SHALL HAVE A MOTION SENSOR AND SR DRIVER CONNECTED TO ZHAGA SOCKET. LIGHT POLES SHALL BE PROGRAMMED TO OPERATE INDIVIDUALLY OR AS GROUPS. LIGHT POLES SHALL TURN ON AT DUSK AND DIM AT A TIME AND LEVEL AS PREFERRED BY THE OWNERS REPRESENTATIVE. ALL DIMMING LEVELS AND TIMES SHALL ADJUSTABLE THROUGH A CELL PHONE APP. OR SIMILAR DEVICE.

**EQUAL FIXTURES:**

a. FIXTURES EQUAL IN ALL RESPECTS TO THE SPECIFIED FIXTURES MANUFACTURED BY, PHILIPS, COOPER LIGHTING, LITHONIA, COLUMBIA, HUBBELL, & DAYBRITE SHALL BE CONSIDERED AS EQUAL.



**1** ELECTRICAL SITE PLAN  
1" = 20'-0"

